

# 22 EVS FOR 2022

Guide

# 22 EVS FOR 2022

With the road to zero and the 2030 deadline looming closer, you may be wondering what types of EVs are on the market.

There are a growing number, but as 2022 starts off, we have 22 EVs that we think should be on your radar:



## 1 TESLA MODEL Y (LONG RANGE DUAL MOTOR)

As well as having the Tesla name, the Model Y follows the same premium electric product with a reliable range and fast charging capability, as well as a spacious and a smooth ride.

**Range 331 miles** (WLTP)

Battery 75 kWh



## 2 TESLA MODEL 3 (LONG RANGE)

Bestseller 2021\*

High tech with a great performance and range, this sophisticated electric model offers speed and space. The Tesla Model 3 is the most cost effective BEV to run too due its battery efficiency.

**Range 374 miles** (WLTP)

Battery 75 kWh



## 3 POLESTAR 2 (LONG RANGE SINGLE MOTOR)

Quality, decent driving and style are all underpinned by this all-electric, high ranged car with good tech and a firm ride.

**Range 320 miles** (WLTP)

Battery 75 kWh



## 4 VOLKSWAGEN ID.3 (PRO PERFORMANCE)

Bestseller 2021\*

A practical, electric family hatchback promoting stylish looks and comfort, while boasting a usable range.

**Range 254 miles** (WLTP)

Battery 58 kWh

\* SMMT Data 2021

(<https://www.smmmt.co.uk/2022/01/covid-stalls-2021-uk-new-car-market-but-record-ev-sales-show-future-direction/>)





# 22 EVS FOR 2022



## 5 SKODA ENYAQ IV 80

Great space, robust and comfortable, but still very much a Skoda, this great electric SUV will work well as a company vehicle.

**Range 317 miles** (WLTP)

Battery 77 kWh



## 6 KIA EV 6 (LONG RANGE)

A reliable 301-mile range with a fast charging ability, this comfortable drive has great overall efficiency and has many practical touches.

**Range 301 miles** (WLTP)

Battery 72.5 kWh



## 7 AUDI Q4 E-TRON 40

Practical and well equipped, this mid-sized SUV has a range of 250 miles and fast charging capabilities, it also boasts a spacious boot size.

**Range 250 miles** (WLTP)

Battery 76.6 kWh

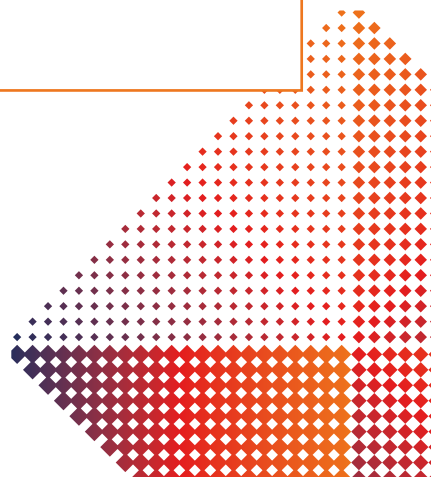


## 8 MERCEDES EQA 250

An upmarket small SUV that offers you quality and tech while retaining its premium feel and charging capability.

**Range 220 miles** (WLTP)

Battery 66.5 kWh



# 22 EVS FOR 2022



## 9 BMW i4 M50

Boasting a 270-mile range, this good-looking car has superb infotainment and impressive charging.

**Range 270 miles** (WLTP)

Battery 80.7 kWh



## 10 BMW iX M60

Get swept away in this 300-mile range electric vehicle that delivers high cabin quality and stylish looks.

**Range 300 miles** (WLTP)

Battery 105.2 kWh



## 11 NISSAN LEAF E+

Bestseller 2021\*

An easy to drive and comfortable electric that comes with a lot of tech for the cost, and spacious cabin space.

**Range 200 miles** (WLTP)

Battery 56 kWh



## 12 MAZDA MX-30

Making a splash in the small car market, the MX-30 is unusual with its real-hinged doors. But don't let that distract you from its high safety rating and attractive driving experience.

**Range 105 miles** (WLTP)

Battery 30 kWh

\* SMMT Data 2021

(<https://www.smmmt.co.uk/2022/01/covid-stalls-2021-uk-new-car-market-but-record-ev-sales-show-future-direction/>)



# 22 EVS FOR 2022



## 13 HONDA e

Retro themed and upholding Honda's engineering and practical design, this small electric car has some great on-board tech and fast acceleration.

**Range 105 miles** (WLTP)

Battery 35,5 kWh



## 14 FORD MUSTANG MACH-E ER RWD

The Mustang Mach-E holds its own as a refined and well-ranged electric SUV with everyday charging capability.

**Range 270 miles** (WLTP)

Battery 88 kWh



## 15 HYUNDAI IONIQ 5 LONG RANGE 2WD

Stylish design, practical on-board tech and good range and charging capabilities mean that this electric car offers a space and comfort.

**Range 235 miles** (WLTP)

Battery 70 kWh



## 16 MG ZS EV LONG RANGE

Bestseller 2021\*

Another 2021 bestseller, the practical small SUV offers a lot of space and competitive range.

**Range 225 miles** (WLTP)

Battery 68.3 kWh

\* SMMT Data 2021

(<https://www.smmmt.co.uk/2022/01/covid-stalls-2021-uk-new-car-market-but-record-ev-sales-show-future-direction/>)

# 22 EVS FOR 2022

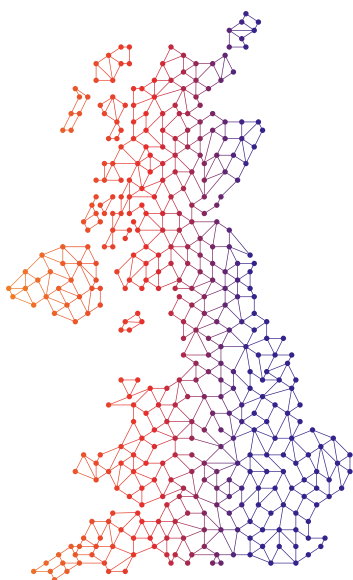


## 17 FIAT 500e HATCHBACK

A brilliant all-electric city car while retaining its familiar Italian flair, it includes on-board tech alongside a practical range that leaves competitors behind.

**Range 145 miles** (WLTP)

Battery 37.3 kWh



As we move closer to 2030 and the UK stops the sale of diesel and petrol cars, more and more EVs will be coming onto the market. However, as you can see from these vehicles, EVs are getting better and better, with different loads and types ready for your business driving style.



## 18 CITROEN e-BERLINGO

125 miles of range, this compact electric van allows you large loading area and payload, fast charging and a good performance.

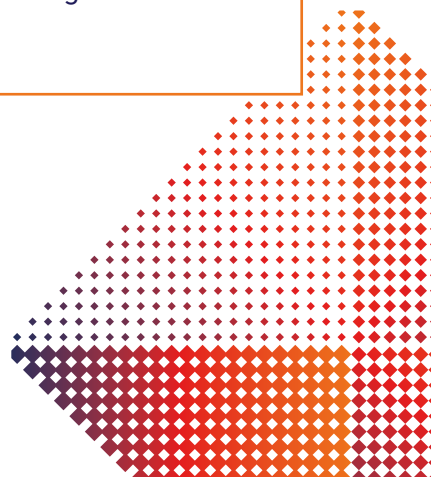
**Range 125 miles** (WLTP)

Payload 800 Kg

Battery 45 kWh

\* SMMT Data 2021

(<https://www.smm.co.uk/2022/01/covid-stalls-2021-uk-new-car-market-but-record-ev-sales-show-future-direction/>)





# 22 EVS FOR 2022



## 19 PEUGEOT e-PARTNER

Dependable with a good payload and decent electric range, this van is a great alternative to the E-Berlingo.

**Range 171 miles** (WLTP)  
Battery 50 kWh

Payload 800 Kg



## 20 FORD E-TRANSIT

A large electric van, the E-Transit offers a 196-mile range with a price lower than competitors.

**Range 196 miles** (WLTP)  
Battery – 68 kWh

Payload 1758 Kg



## 21 RENAULT KANGOO ELECTRIC

With the E-Tech coming out in Spring 2022, the Kangoo has a range of 143-miles and a good payload, meaning it could be a contender if you're looking for an EV van.

**Range 143 miles** (WLTP)  
Battery 33 kWh

Payload 650 Kg

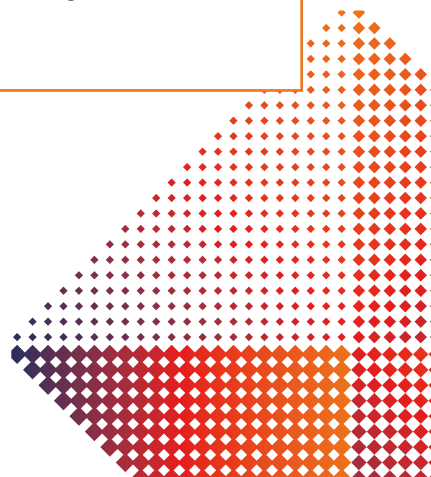


## 22 MERCEDES eVITO

Quality with a great payload, Mercedes offers a modest range that would work well for last-mile deliveries and overnight charging.

**Range 190 miles** (WLTP)  
Battery 90 kWh

Payload 807 Kg





“

With all these new and exciting Battery Electric Vehicle models coming out into the market place providing a wider choice of vehicle combined with the potential cost and environmental saving, they have become a valid alternative to ICE vehicles. Its no wonder that in 2021 BEVs made up 12% of the new vehicle registrations over the whole year and these BEV sales rose to December 2021 to 26% of the whole market. The tipping point for BEV is gathering pace.

“

Tony Greig, Business Intelligence and Consultancy





You should seek independent advice to determine if this product is suitable for you. Security, in the form of guarantees or indemnities, may be required. Product fees may apply. Finance subject to status and is only available for business purposes. Lombard Vehicle Solutions (LVS) is provided by ALD Automotive Ltd (ALD), trading as Lombard Vehicle Solutions, Oakwood Drive, Emersons Green, Bristol, BS16 7LB. LVS is a product solution provided for Lombard by ALD and there is a financial connection between Lombard and ALD as a result. The arrangement ensures that Lombard customers as well as those of National Westminster Bank Plc and The Royal Bank of Scotland plc have access to a wider range of products to meet their vehicle asset finance needs. Customers whose agreements are regulated by the Financial Conduct Authority should be aware that Lombard is acting as a credit broker and not a lender, and that Lombard will receive a payment from ALD should you wish to proceed with an agreement. You can ask Lombard or ALD for more information about this.

Let's talk

☎ 0117 908 6490

✉ [enquiries@lombardvehiclesolutions.com](mailto:enquiries@lombardvehiclesolutions.com)



[www.lombardvehiclesolutions.co.uk](http://www.lombardvehiclesolutions.co.uk)